

# MORLEY MEMORIAL PRIMARY SCHOOL Catch-Up Strategy 2020-2021

Evidence suggests that the impact of school closures has been a widening of the attainment gaps which already existed and that sustained support will be needed to help those pupils disproportionately disadvantaged to catch up. The school expects to receive £32,000 of funding to implement catch-up provision.

Nikki Brown

## 1 Teaching

Professional development to improve quality of feedback

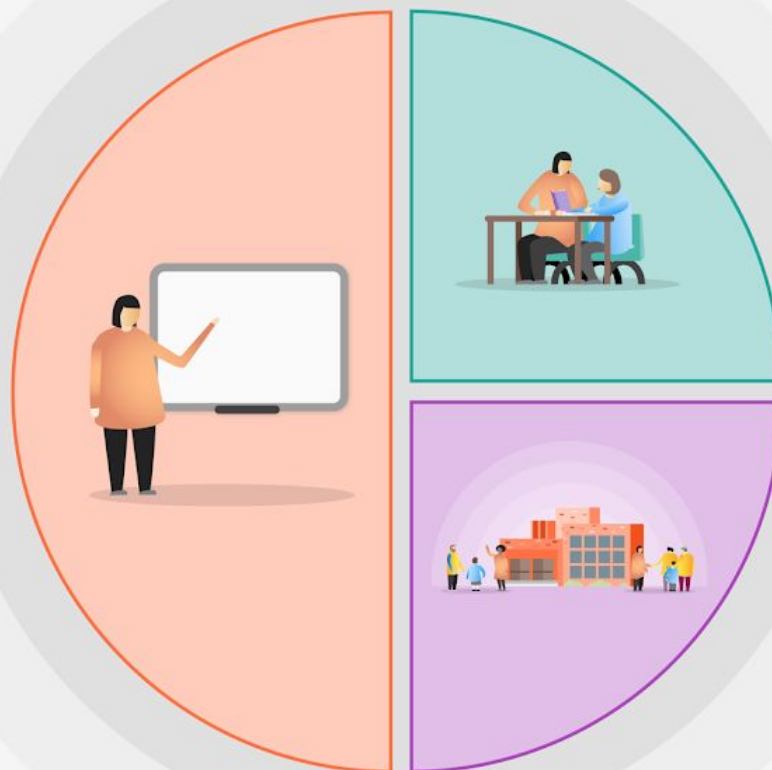
Opportunities to reflect upon the impact of teaching on different groups of pupils including opportunities for lesson study

Combining standardised assessment with teacher assessment

Use of specialised assessment tools to gather more detailed information on reading difficulties

Developing subject knowledge in English and Maths to improve planning of small steps

Use of achievement teams to plan for accelerated progress and monitor impact



## 2 Targeted academic support

Y3 additional phonics teaching sessions delivered by TA

KS2 small group tutoring support for reading with SEN teacher plus TAs using Reading for Inference

Increase TA hours to deliver 1<sup>st</sup> Class at number and Success at arithmetic to a wider group of children

NELI intervention for Reception to develop early language

## 3 Wider strategies

Supporting parents of children in need of catch up with reading at home or phonics.

Additional training for teachers and TAs in managing behaviour and building concentration and engagement

Additional resources for pupil well-being lead and TAs to support emotional well-being